

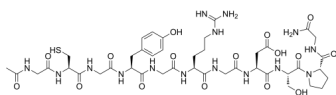
Integrin Binding Peptide

Cat. No.: HY-P2532
Batch No.: 233263
CAS No.: 278792-07-7
Molecular Formula: C₄₂H₆₃N₁₅O₁₆S

ANALYTICAL DATA

Theoretical: C(-), H(-), N(-), Peptide Content(≥60.0%)
Result: C(41.49%), H(6.13%), N(17.84%), Peptide Content(90.50%)

Chemical Structure:



Caution: Product has not been fully validated for medical applications. For research use only.

Tel: 609-228-6898

Fax: 609-228-5909

E-mail: tech@MedChemExpress.com

Address: 1 Deer Park Dr, Suite Q, Monmouth Junction, NJ 08852, USA