

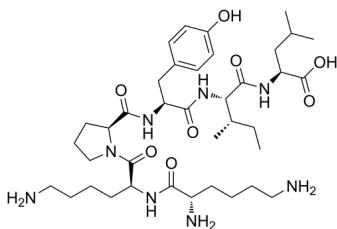
[Lys8, Lys9]-Neurotensin (8-13)

Cat. No.: HY-P2544
Batch No.: 249716
CAS No.: 139026-64-5
Molecular Formula: C₃₈H₆₄N₈O₈

ANALYTICAL DATA

Theoretical: C(-), H(-), N(-), Peptide Content(≥60.0%)
Result: C(53.36%), H(8.54%), N(12.16%), Peptide Content(82.6%)

Chemical Structure:



Caution: Product has not been fully validated for medical applications. For research use only.

Tel: 609-228-6898

Fax: 609-228-5909

E-mail: tech@MedChemExpress.com

Address: 1 Deer Park Dr, Suite Q, Monmouth Junction, NJ 08852, USA