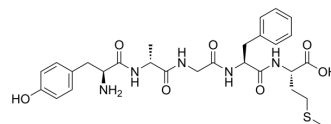


[D-Ala²]-Met-Enkephalin

Cat. No.:	HY-P2626
CAS No.:	61370-87-4
Molecular Formula:	C ₂₈ H ₃₇ N ₅ O ₇ S
Molecular Weight:	587.69
Sequence Shortening:	Y-{d-Ala}-GFM
Target:	Opioid Receptor
Pathway:	GPCR/G Protein; Neuronal Signaling
Storage:	Please store the product under the recommended conditions in the Certificate of Analysis.



BIOLOGICAL ACTIVITY

Description	[D-Ala ²]-Met-Enkephalin, an opioid peptide, is a potent opioid agonist. [D-Ala ²]-Met-Enkephalin inhibits ACh-induced and suckling-induced oxytocin (OT) release ^{[1][2]} .	
In Vivo	[D-Ala ²]-Met-Enkephalin (0.01-1µg; ICV; once) inhibits suckling-induced oxytocin (OT) release in lactating mice ^[1] . MCE has not independently confirmed the accuracy of these methods. They are for reference only.	
	Animal Model:	Lactating rats ^[1]
	Dosage:	0.01, 0.1 and 1 µg
	Administration:	Intracerebroventricular injection
	Result:	Inhibited ACh-induced and suckling-induced OT release.

REFERENCES

- [1]. Haldar J, et, al. Morphine, β-endorphin and [D-Ala²] Met-enkephalin inhibit oxytocin release by acetylcholine and suckling. 1982 Jul-Aug;3(4):663-8.
- [2]. Godoy AM, et, al. Modulation of the escape response by [d-Ala²]Met-enkephalin in the crab Chasmagnathus. 1995 Mar;50(3):445-51.

Caution: Product has not been fully validated for medical applications. For research use only.

Tel: 609-228-6898

Fax: 609-228-5909

E-mail: tech@MedChemExpress.com

Address: 1 Deer Park Dr, Suite Q, Monmouth Junction, NJ 08852, USA