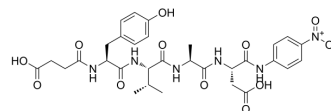


Suc-YVAD-pNA

Cat. No.:	HY-P2630
CAS No.:	208264-84-0
Molecular Formula:	C ₃₁ H ₃₈ N ₆ O ₁₂
Molecular Weight:	686.67
Sequence:	{Suc}-Tyr-Val-Ala-Asp-pNA
Sequence Shortening:	{Suc}-YVAD-pNA
Target:	Interleukin Related
Pathway:	Immunology/Inflammation
Storage:	Please store the product under the recommended conditions in the Certificate of Analysis.



BIOLOGICAL ACTIVITY

Description

Suc-YVAD-pNA is a substrate of ICE. Interleukin-1 β -converting enzyme (ICE) is a cysteine protease responsible for the cleavage of pre-interleukin-1 β (pre-IL-1 β) to the mature cytokine and a member of a family of related proteases (the caspases)^[1].

REFERENCES

[1]. N Margolin, et al. Substrate and inhibitor specificity of interleukin-1 beta-converting enzyme and related caspases. J Biol Chem. 1997 Mar 14;272(11):7223-8.

Caution: Product has not been fully validated for medical applications. For research use only.

Tel: 609-228-6898

Fax: 609-228-5909

E-mail: tech@MedChemExpress.com

Address: 1 Deer Park Dr, Suite Q, Monmouth Junction, NJ 08852, USA