

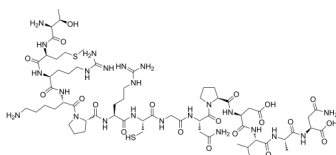
Peptide 74

Cat. No.: HY-P2641
Batch No.: 118113
CAS No.: 132116-39-3
Molecular Formula: C₆₂H₁₀₇N₂₃O₂₀S₂

ANALYTICAL DATA

Theoretical: C(-), H(-), N(-), Peptide Content(≥60.0%)
Result: C(39.43%), H(5.62%), N(15.05%), Peptide Content(72.81%)

Chemical Structure:



Caution: Product has not been fully validated for medical applications. For research use only.

Tel: 609-228-6898

Fax: 609-228-5909

E-mail: tech@MedChemExpress.com

Address: 1 Deer Park Dr, Suite Q, Monmouth Junction, NJ 08852, USA