

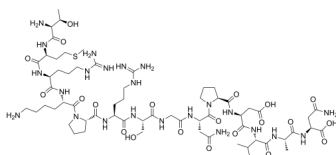
Peptide 78

Cat. No.: HY-P2642
Batch No.: 118114
CAS No.: 132116-62-2
Molecular Formula: C₆₂H₁₀₇N₂₃O₂₁S

ANALYTICAL DATA

Theoretical: C(-), H(-), N(-), Peptide Content(≥60.0%)
Result: C(39.60%), H(5.68%), N(15.15%), Peptide Content(72.55%)

Chemical Structure:



Caution: Product has not been fully validated for medical applications. For research use only.

Tel: 609-228-6898

Fax: 609-228-5909

E-mail: tech@MedChemExpress.com

Address: 1 Deer Park Dr, Suite Q, Monmouth Junction, NJ 08852, USA