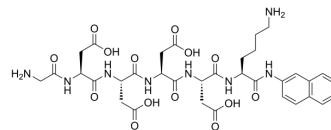


Gly-Asp-Asp-Asp-Lys-β-naphthylamide

Cat. No.:	HY-P2660
CAS No.:	70023-02-8
Molecular Formula:	C ₃₄ H ₄₄ N ₈ O ₁₄
Molecular Weight:	788.76
Sequence:	Gly-Asp-Asp-Asp-Asp-[Lys-PAβN]
Sequence Shortening:	GDDDD-[Lys-PAβN]
Target:	Enteropeptidase
Pathway:	Metabolic Enzyme/Protease
Storage:	Sealed storage, away from moisture and light
	Powder -80°C 2 years
	-20°C 1 year



* In solvent : -80°C, 6 months; -20°C, 1 month (sealed storage, away from moisture and light)

SOLVENT & SOLUBILITY

In Vitro

DMSO : 25 mg/mL (31.70 mM; Need ultrasonic)

Concentration	Mass		
	1 mg	5 mg	10 mg
1 mM	1.2678 mL	6.3391 mL	12.6781 mL
5 mM	0.2536 mL	1.2678 mL	2.5356 mL
10 mM	0.1268 mL	0.6339 mL	1.2678 mL

Please refer to the solubility information to select the appropriate solvent.

BIOLOGICAL ACTIVITY

Description

Gly-Asp-Asp-Asp-Asp-Lys-β-naphthylamide (GD4K-na) is a substrate for human enteropeptidase (K_m : 0.16 mM)^[1].

In Vitro

The purified recombinant human enteropeptidase light chain (L-HEP) cleaves Gly-Asp-Asp-Asp-Asp-Lys-β-naphthylamide with K_m : 0:16 mM and k_{cat} : 115 s⁻¹[1].

MCE has not independently confirmed the accuracy of these methods. They are for reference only.

REFERENCES

[1]. Gasparian ME, et al. Expression, purification, and characterization of human enteropeptidase catalytic subunit in Escherichia coli. Protein Expr Purif. 2003 Sep;31(1):133-9.

Caution: Product has not been fully validated for medical applications. For research use only.

Tel: 609-228-6898

Fax: 609-228-5909

E-mail: tech@MedChemExpress.com

Address: 1 Deer Park Dr, Suite Q, Monmouth Junction, NJ 08852, USA