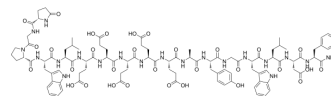


## [Leu15]-Gastrin I (human)

Cat. No.:	HY-P2671
CAS No.:	39024-57-2
Molecular Formula:	C <sub>98</sub> H <sub>126</sub> N <sub>20</sub> O <sub>31</sub>
Molecular Weight:	2080.16
Sequence:	{Pyr}-Gly-Pro-Trp-Leu-Glu-Glu-Glu-Glu-Ala-Tyr-Gly-Trp-Leu-Asp-Phe-NH <sub>2</sub>
Sequence Shortening:	{Pyr}-GPWLEEEEEAYGWLDF-NH <sub>2</sub>
Target:	Others
Pathway:	Others
Storage:	Sealed storage, away from moisture and light



Powder    -80°C    2 years  
               -20°C    1 year

\* In solvent : -80°C, 6 months; -20°C, 1 month (sealed storage, away from moisture and light)

### SOLVENT & SOLUBILITY

#### In Vitro

H<sub>2</sub>O : 10.53 mg/mL (5.06 mM); ultrasonic and adjust pH to 11 with NaOH)

Concentration	Mass		
	1 mg	5 mg	10 mg
1 mM	0.4807 mL	2.4037 mL	4.8073 mL
5 mM	0.0961 mL	0.4807 mL	0.9615 mL
10 mM	---	---	---

Please refer to the solubility information to select the appropriate solvent.

### BIOLOGICAL ACTIVITY

#### Description

[Leu15]-Gastrin I (human) is a peptide. Gastrin exerts its function through G-protein-coupled receptor called the cholecystokinin (CCK) or CCK-B receptor (CCK-BR)<sup>[1]</sup>.

### REFERENCES

[1]. Kleomenis Barlos, et al. Veresterung von partiell geschützten peptid-fragmenten mit harzen. Einsatz von 2-chlortritylchlorid zur synthese von Leu15 -gastrin I[J]. Tetrahedron Letters, 1989.

---

**Caution: Product has not been fully validated for medical applications. For research use only.**

Tel: 609-228-6898

Fax: 609-228-5909

E-mail: [tech@MedChemExpress.com](mailto:tech@MedChemExpress.com)

Address: 1 Deer Park Dr, Suite Q, Monmouth Junction, NJ 08852, USA