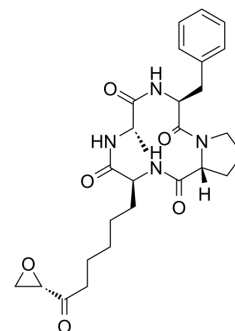


1-Alaninechlamydocin

Cat. No.:	HY-P2698
CAS No.:	141446-96-0
Molecular Formula:	C ₂₇ H ₃₆ N ₄ O ₆
Molecular Weight:	512.6
Target:	HDAC; Apoptosis
Pathway:	Cell Cycle/DNA Damage; Epigenetics; Apoptosis
Storage:	Please store the product under the recommended conditions in the Certificate of Analysis.



BIOLOGICAL ACTIVITY

Description	1-Alaninechlamydocin, a cyclic tetrapeptide, is a potent HDAC inhibitor (IC ₅₀ =6.4 nM). 1-Alaninechlamydocin induces G2/M cell cycle arrest and apoptosis in MIA PaCa-2 cells ^[1] .
IC₅₀ & Target	HDAC 6.4 nM (IC ₅₀)

REFERENCES

[1]. Du L, et al. A potent HDAC inhibitor, 1-alaninechlamydocin, from a Tolypocladium sp. induces G2/M cell cycle arrest and apoptosis in MIA PaCa-2 cells. J Nat Prod. 2014;77(7):1753-1757.

Caution: Product has not been fully validated for medical applications. For research use only.

Tel: 609-228-6898

Fax: 609-228-5909

E-mail: tech@MedChemExpress.com

Address: 1 Deer Park Dr, Suite Q, Monmouth Junction, NJ 08852, USA