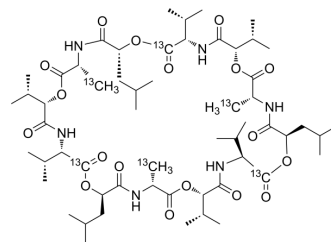


Cereulide-¹³C₆

Cat. No.:	HY-P3003S
CAS No.:	1487375-69-8
Molecular Formula:	C ₅₁ ¹³ C ₆ H ₉₆ N ₆ O ₁₈
Molecular Weight:	1159.36
Target:	Isotope-Labeled Compounds
Pathway:	Others
Storage:	Please store the product under the recommended conditions in the Certificate of Analysis.



BIOLOGICAL ACTIVITY

Description	Cereulide-13C6 is the 13C6 labeled Cereulide.
-------------	---

REFERENCES

[1]. Russak EM, et, al. Impact of Deuterium Substitution on the Pharmacokinetics of Pharmaceuticals. Ann Pharmacother. 2019 Feb;53(2):211-216.

Caution: Product has not been fully validated for medical applications. For research use only.

Tel: 609-228-6898

Fax: 609-228-5909

E-mail: tech@MedChemExpress.com

Address: 1 Deer Park Dr, Suite Q, Monmouth Junction, NJ 08852, USA