

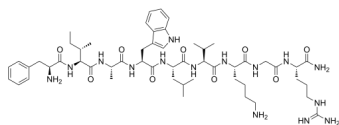
GLP-1(28-36)amide

Cat. No.: HY-P3101
Batch No.: 309786
CAS No.: 1225021-13-5
Molecular Formula: C₅₄H₈₅N₁₅O₉

ANALYTICAL DATA

Theoretical: C(-), H(-), N(-), Peptide Content(≥60.0%)
Result: C(52.64%), H(7.54%), N(16.92%), Peptide Content(87.70%)

Chemical Structure:



Caution: Product has not been fully validated for medical applications. For research use only.

Tel: 609-228-6898

Fax: 609-228-5909

E-mail: tech@MedChemExpress.com

Address: 1 Deer Park Dr, Suite Q, Monmouth Junction, NJ 08852, USA