

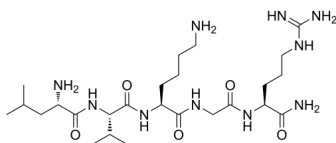
## GLP-1(32-36)amide

Cat. No.: HY-P3102  
Batch No.: 95222  
CAS No.: 1417302-71-6  
Molecular Formula: C<sub>25</sub>H<sub>50</sub>N<sub>10</sub>O<sub>5</sub>

### ANALYTICAL DATA

Theoretical: C(-), H(-), N(-), Peptide Content(≥60.0%)  
Result: C(45.02%), H(9.23%), N(16.86%), Peptide Content(68.73%)

Chemical Structure:



**Caution: Product has not been fully validated for medical applications. For research use only.**

Tel: 609-228-6898

Fax: 609-228-5909

E-mail: [tech@MedChemExpress.com](mailto:tech@MedChemExpress.com)

Address: 1 Deer Park Dr, Suite Q, Monmouth Junction, NJ 08852, USA