

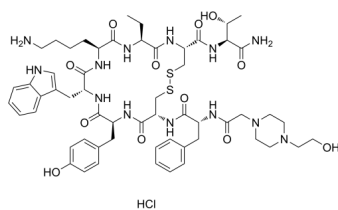
BIM-23190 (hydrochloride)

Cat. No.: HY-P3124A
Batch No.: 146969
Molecular Formula: C₅₇H₈₀ClN₁₃O₁₂S₂

ANALYTICAL DATA

Theoretical: C(-), H(-), N(-), Peptide Content(≥60.0%)
Result: C(46.49%), H(6.31%), N(12.53%), Peptide Content(82.80%)

Chemical Structure:



Caution: Product has not been fully validated for medical applications. For research use only.

Tel: 609-228-6898

Fax: 609-228-5909

E-mail: tech@MedChemExpress.com

Address: 1 Deer Park Dr, Suite Q, Monmouth Junction, NJ 08852, USA