

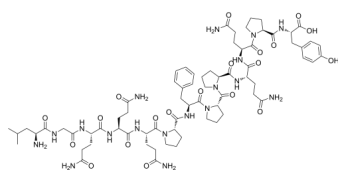
Gliadin p31-43

Cat. No.: HY-P3151
Batch No.: 145707
CAS No.: 176326-01-5
Molecular Formula: C₇₁H₁₀₂N₁₈O₂₀

ANALYTICAL DATA

Theoretical: C(-), H(-), N(-), Peptide Content(≥60.0%)
Result: C(51.43%), H(6.43%), N(14.53%), Peptide Content(88.1%)

Chemical Structure:



Caution: Product has not been fully validated for medical applications. For research use only.

Tel: 609-228-6898

Fax: 609-228-5909

E-mail: tech@MedChemExpress.com

Address: 1 Deer Park Dr, Suite Q, Monmouth Junction, NJ 08852, USA