

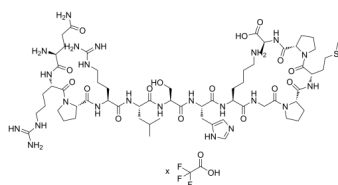
## (Ala13)-Apelin-13 (TFA)

Cat. No.: HY-P3162A  
Batch No.: 293707  
Molecular Formula:  $C_{63}H_{107}N_{23}O_{16}S \cdot xC_2HF_3O_2$

### ANALYTICAL DATA

Theoretical: C(-), H(-), N(-), Peptide Content( $\geq 60.0\%$ )  
Result: C(41.34%), H(5.65%), N(15.53%), Peptide Content(71.10%)

Chemical Structure:



**Caution: Product has not been fully validated for medical applications. For research use only.**

Tel: 609-228-6898

Fax: 609-228-5909

E-mail: [tech@MedChemExpress.com](mailto:tech@MedChemExpress.com)

Address: 1 Deer Park Dr, Suite Q, Monmouth Junction, NJ 08852, USA