

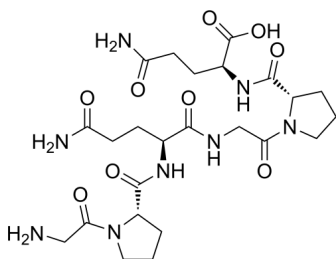
Hexapeptide-9

Cat. No.: HY-P3163
Batch No.: 272320
CAS No.: 885024-94-2
Molecular Formula: C₂₄H₃₈N₈O₉

ANALYTICAL DATA

Theoretical: C(-), H(-), N(-), Peptide Content(≥60.0%)
Result: C(43.83%), H(6.02%), N(17.21%), Peptide Content(89.50%)

Chemical Structure:



Caution: Product has not been fully validated for medical applications. For research use only.

Tel: 609-228-6898

Fax: 609-228-5909

E-mail: tech@MedChemExpress.com

Address: 1 Deer Park Dr, Suite Q, Monmouth Junction, NJ 08852, USA