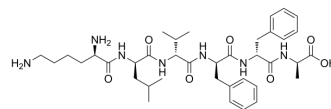


D-KLVFFA

Cat. No.:	HY-P3244
CAS No.:	342877-55-8
Molecular Formula:	C ₃₈ H ₅₇ N ₇ O ₇
Molecular Weight:	723.9
Sequence:	D-Lys-D-Leu-D-Val-D-Phe-D-Phe-D-Ala
Sequence Shortening:	d-KLVFFA
Target:	Amyloid- β
Pathway:	Neuronal Signaling
Storage:	Please store the product under the recommended conditions in the Certificate of Analysis.



BIOLOGICAL ACTIVITY

Description	D-KLVFFA is the inhibitor of Amyloid- β assembly, with the IC ₅₀ of 2.6 μ M, that can be used in Alzheimer's disease study ^[1] .
-------------	--

REFERENCES

[1]. Robert J Chalifour, et al. Stereoselective interactions of peptide inhibitors with the beta-amyloid peptide. J Biol Chem. 2003 Sep 12;278(37):34874-81.

Caution: Product has not been fully validated for medical applications. For research use only.

Tel: 609-228-6898

Fax: 609-228-5909

E-mail: tech@MedChemExpress.com

Address: 1 Deer Park Dr, Suite Q, Monmouth Junction, NJ 08852, USA