

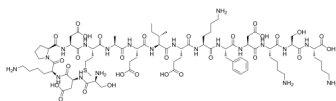
SDKPDMAEIEKFDKSK

Cat. No.: HY-P3301
Batch No.: 125243
CAS No.: 1339864-27-5
Molecular Formula: C₈₀H₁₃₀N₂₀O₂₉S

ANALYTICAL DATA

Theoretical: C(-), H(-), N(-), Peptide Content(≥60.0%)
Result: C(48.09%), H(6.91%), N(13.77%), Peptide Content(91.80%)

Chemical Structure:



Caution: Product has not been fully validated for medical applications. For research use only.

Tel: 609-228-6898

Fax: 609-228-5909

E-mail: tech@MedChemExpress.com

Address: 1 Deer Park Dr, Suite Q, Monmouth Junction, NJ 08852, USA