

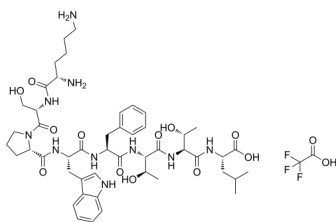
KSPWFTTL (TFA)

Cat. No.: HY-P3333A
Batch No.: 126310
Molecular Formula: C₅₀H₇₁F₃N₁₀O₁₄

ANALYTICAL DATA

Theoretical: C(-), H(-), N(-), Peptide Content(≥60.0%)
Result: C(49.62%), H(5.97%), N(11.17%), Peptide Content(78.10%)

Chemical Structure:



Caution: Product has not been fully validated for medical applications. For research use only.

Tel: 609-228-6898

Fax: 609-228-5909

E-mail: tech@MedChemExpress.com

Address: 1 Deer Park Dr, Suite Q, Monmouth Junction, NJ 08852, USA