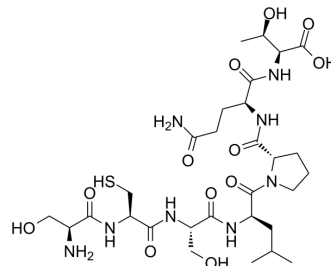


[D-Leu-4]-OB3

Cat. No.:	HY-P3342
CAS No.:	289056-32-2
Molecular Formula:	C ₂₉ H ₅₀ N ₈ O ₁₂ S
Molecular Weight:	734.82
Sequence:	Ser-Cys-Ser-[D-Leu]-Pro-Gln-Thr
Sequence Shortening:	SCS-[D-Leu]-PQT
Target:	PD-1/PD-L1; Apoptosis
Pathway:	Immunology/Inflammation; Apoptosis
Storage:	Please store the product under the recommended conditions in the Certificate of Analysis.



BIOLOGICAL ACTIVITY

Description	[D-Leu-4]-OB3 inhibits expressions of pro-inflammatory, proliferative and metastatic genes and PD-L1 expression. [D-Leu-4]-OB3 stimulates expression of pro-apoptotic genes ^[1] .
-------------	----------------------------------------------------------------------------------------------------------------------------------------------------------------------------------------------

REFERENCES

[1]. Yih Ho, et al. Leptin-derived peptides block leptin-induced proliferation by reducing expression of pro-inflammatory genes in hepatocellular carcinoma cells. *Food Chem Toxicol.* 2019 Nov;133:110808.

Caution: Product has not been fully validated for medical applications. For research use only.

Tel: 609-228-6898

Fax: 609-228-5909

E-mail: tech@MedChemExpress.com

Address: 1 Deer Park Dr, Suite Q, Monmouth Junction, NJ 08852, USA