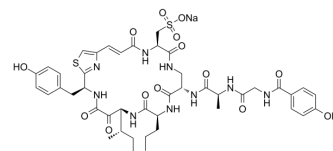


Cyclotheonellazole A

Cat. No.:	HY-P3356
CAS No.:	2094993-48-1
Molecular Formula:	$C_{44}H_{54}N_9NaO_{14}S_2$
Molecular Weight:	1020.07
Target:	Elastase; Proteasome
Pathway:	Metabolic Enzyme/Protease
Storage:	Please store the product under the recommended conditions in the Certificate of Analysis.



BIOLOGICAL ACTIVITY

Description	Cyclotheonellazole A is a natural macrocyclic peptide and a potent elastase inhibitor ($IC_{50}=0.034$ nM). Cyclotheonellazole A inhibits chymotrypsin with an IC_{50} value of 0.62 nM ^{[1][2]} .
-------------	--

REFERENCES

[1]. Cui Y, et al. Elastase Inhibitor Cyclotheonellazole A: Total Synthesis and In Vivo Biological Evaluation for Acute Lung Injury. J Med Chem. 2022;65(4):2971-2987.

Caution: Product has not been fully validated for medical applications. For research use only.

Tel: 609-228-6898

Fax: 609-228-5909

E-mail: tech@MedChemExpress.com

Address: 1 Deer Park Dr, Suite Q, Monmouth Junction, NJ 08852, USA