

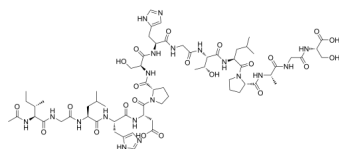
Rimtoregtide

Cat. No.: HY-P3377
Batch No.: 149060
CAS No.: 2251722-35-5
Molecular Formula: C₆₅H₁₀₁N₁₉O₂₂

ANALYTICAL DATA

Theoretical: C(-), H(-), N(-), Peptide Content(≥60.0%)
Result: C(46.47%), H(6.94%), N(15.89%), Peptide Content(89.62%)

Chemical Structure:



Caution: Product has not been fully validated for medical applications. For research use only.

Tel: 609-228-6898

Fax: 609-228-5909

E-mail: tech@MedChemExpress.com

Address: 1 Deer Park Dr, Suite Q, Monmouth Junction, NJ 08852, USA