

PRRVRLK (acetate)

Cat. No.: HY-P3438A

Batch No.: 160328

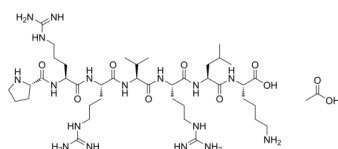
Molecular Formula: C₄₂H₈₁N₁₇O₁₀

ANALYTICAL DATA

Theoretical: C(-), H(-), N(-), Peptide Content(≥60.0%)

Result: C(43.76%), H(8.25%), N(18.55%), Peptide Content(72.00%)

Chemical Structure:



Caution: Product has not been fully validated for medical applications. For research use only.

Tel: 609-228-6898

Fax: 609-228-5909

E-mail: tech@MedChemExpress.com

Address: 1 Deer Park Dr, Suite Q, Monmouth Junction, NJ 08852, USA