

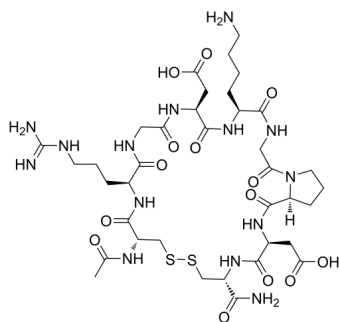
## Certepetide

Cat. No.: HY-P3448  
Batch No.: 346181  
CAS No.: 2580154-02-3  
Molecular Formula: C<sub>37</sub>H<sub>60</sub>N<sub>14</sub>O<sub>14</sub>S<sub>2</sub>

### ANALYTICAL DATA

Theoretical: C(-), H(-), N(-), Peptide Content(≥60.0%)  
Result: C(40.50%), H(6.22%), N(17.49%), Peptide Content(88.15%)

Chemical Structure:



**Caution: Product has not been fully validated for medical applications. For research use only.**

Tel: 609-228-6898

Fax: 609-228-5909

E-mail: [tech@MedChemExpress.com](mailto:tech@MedChemExpress.com)

Address: 1 Deer Park Dr, Suite Q, Monmouth Junction, NJ 08852, USA