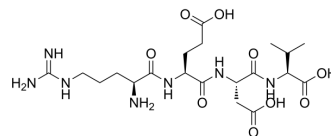


REDV

Cat. No.:	HY-P3522
CAS No.:	107978-83-6
Molecular Formula:	C ₂₀ H ₃₅ N ₇ O ₉
Molecular Weight:	517.53
Sequence Shortening:	REDV
Target:	Integrin
Pathway:	Cytoskeleton
Storage:	Please store the product under the recommended conditions in the Certificate of Analysis.



BIOLOGICAL ACTIVITY

Description

REDV is the minimal active sequence within the CS5 site of the alternatively spliced type III connecting segment (III_{CS}) region of fibronectin. REDV can mediate adhesion to the III_{CS} region of plasma fibronectin by binding the integrin alpha 4 beta 1 (α4β1). REDV can be used for the research of cell adhesion^[1].

REFERENCES

[1]. S P Massia, et al. Vascular endothelial cell adhesion and spreading promoted by the peptide REDV of the III_{CS} region of plasma fibronectin is mediated by integrin alpha 4 beta 1. J Biol Chem. 1992 Jul 15;267(20):14019-26.

Caution: Product has not been fully validated for medical applications. For research use only.

Tel: 609-228-6898

Fax: 609-228-5909

E-mail: tech@MedChemExpress.com

Address: 1 Deer Park Dr, Suite Q, Monmouth Junction, NJ 08852, USA