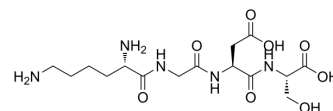


KGDS

Cat. No.:	HY-P3523
CAS No.:	93674-95-4
Molecular Formula:	C ₁₅ H ₂₇ N ₅ O ₈
Molecular Weight:	405.4
Sequence Shortening:	KGDS
Target:	Integrin
Pathway:	Cytoskeleton
Storage:	Please store the product under the recommended conditions in the Certificate of Analysis.



BIOLOGICAL ACTIVITY

Description	KGDS is synthetic peptides, targeting integrin GPIIb-IIIa located on the membrane of human activated platelets. Amino acid sequence: Lys-Gly-Asp-Ser ^[1] .
-------------	---

REFERENCES

[1]. Luo, W., et al. Construction and in vitro studies of magnetic-apoferritin nanocages conjugated with KGDS peptide targeted at activated platelets for the MRI diagnosis of thrombus. J Nanopart Res 21, 177 (2019).

Caution: Product has not been fully validated for medical applications. For research use only.

Tel: 609-228-6898

Fax: 609-228-5909

E-mail: tech@MedChemExpress.com

Address: 1 Deer Park Dr, Suite Q, Monmouth Junction, NJ 08852, USA