

## GRGESP

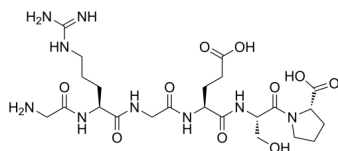
---

Cat. No.: HY-P3524  
Batch No.: 242818  
CAS No.: 99896-88-5  
Molecular Formula: C<sub>23</sub>H<sub>39</sub>N<sub>9</sub>O<sub>10</sub>

### ANALYTICAL DATA

Theoretical: C(-), H(-), N(-), Peptide Content(≥60.0%)  
Result: C(40.98%), H(6.35%), N(18.74%), Peptide Content(89.5%)

Chemical Structure:



**Caution: Product has not been fully validated for medical applications. For research use only.**

Tel: 609-228-6898

Fax: 609-228-5909

E-mail: [tech@MedChemExpress.com](mailto:tech@MedChemExpress.com)

Address: 1 Deer Park Dr, Suite Q, Monmouth Junction, NJ 08852, USA