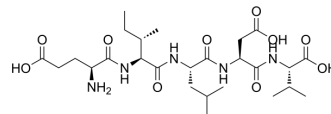


EILDV (human, bovine, rat)

| | |
|----------------------|---|
| Cat. No.: | HY-P3534 |
| CAS No.: | 150525-67-0 |
| Molecular Formula: | C ₂₆ H ₄₅ N ₅ O ₁₀ |
| Molecular Weight: | 587.66 |
| Sequence Shortening: | EILDV |
| Target: | Others |
| Pathway: | Others |
| Storage: | Please store the product under the recommended conditions in the Certificate of Analysis. |



BIOLOGICAL ACTIVITY

| | |
|--------------------|---|
| Description | EILDV (human, bovine, rat) is an analogue of the active pentapeptide. EILDV (human, bovine, rat) has active tripeptide amino acid sequence LDV that is conserved in human, bovine, rat. EILDV (human, bovine, rat) can be used for the research of cell adhesion ^[1] . |
| In Vitro | EILDV (human, bovine, rat) shows significant activity for cell adhesion inhibition ^[1] . MCE has not independently confirmed the accuracy of these methods. They are for reference only. |

REFERENCES

[1]. A Komoriya, et al. The minimal essential sequence for a major cell type-specific adhesion site (CS1) within the alternatively spliced type III connecting segment domain of fibronectin is leucine-aspartic acid-valine. J Biol Chem. 1991 Aug 15;266(23):15075-9.

Caution: Product has not been fully validated for medical applications. For research use only.

Tel: 609-228-6898

Fax: 609-228-5909

E-mail: tech@MedChemExpress.com

Address: 1 Deer Park Dr, Suite Q, Monmouth Junction, NJ 08852, USA