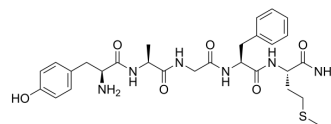


[Ala2] Met-Enkephalinamide

Cat. No.:	HY-P3551
CAS No.:	64240-07-9
Molecular Formula:	C ₂₈ H ₃₈ N ₆ O ₆ S
Molecular Weight:	586.7
Sequence Shortening:	YAGFM-NH ₂
Target:	Others
Pathway:	Others
Storage:	Please store the product under the recommended conditions in the Certificate of Analysis.



BIOLOGICAL ACTIVITY

Description	[Ala2] Met-Enkephalinamide is an active peptide. [Ala2] Met-Enkephalinamide can be used for the research of various biochemical studies ^[1] .
--------------------	--

REFERENCES

[1]. Schey, et al. Observation of sequence-specific peptide fragmentation using extended tandem mass spectrometry experiments. Rapid Communications in Mass Spectrometry. Volume: 3. Issue: 9. Pages: 305-9. Journal.1989

Caution: Product has not been fully validated for medical applications. For research use only.

Tel: 609-228-6898

Fax: 609-228-5909

E-mail: tech@MedChemExpress.com

Address: 1 Deer Park Dr, Suite Q, Monmouth Junction, NJ 08852, USA