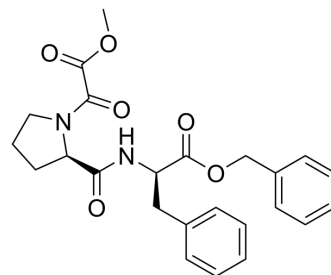


## Carbomethoxycarbonyl-D-Pro-D-Phe-OBzl

Cat. No.:	HY-P3554
CAS No.:	129988-00-7
Molecular Formula:	C <sub>24</sub> H <sub>26</sub> N <sub>2</sub> O <sub>6</sub>
Molecular Weight:	438.47
Target:	HIV
Pathway:	Anti-infection
Storage:	Please store the product under the recommended conditions in the Certificate of Analysis.



### BIOLOGICAL ACTIVITY

Description	Carbomethoxycarbonyl-D-Pro-D-Phe-OBzl (compound (CPF(LL))) is an HIV-1 inhibitor. Carbomethoxycarbonyl-D-Pro-D-Phe-OBzl interacts with gp120 to block gp120 binding to CD4 and preserve CD4-dependent T cell function <sup>[1]</sup> .
IC <sub>50</sub> & Target	HIV-1 <sup>[1]</sup> .

### REFERENCES

[1]. Finberg RW, et al. Prevention of HIV-1 infection and preservation of CD4 function by the binding of CPFs to gp120. Science. 1990 Jul 20;249(4966):287-91.

**Caution: Product has not been fully validated for medical applications. For research use only.**

Tel: 609-228-6898

Fax: 609-228-5909

E-mail: tech@MedChemExpress.com

Address: 1 Deer Park Dr, Suite Q, Monmouth Junction, NJ 08852, USA