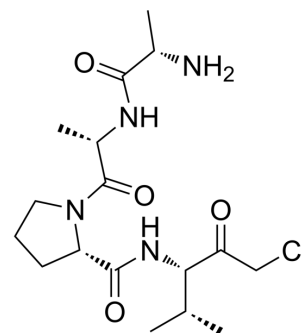


Ala-Ala-Pro-Val-chloromethylketone

Cat. No.:	HY-P3648
CAS No.:	90105-47-8
Molecular Formula:	C ₁₇ H ₂₉ ClN ₄ O ₄
Molecular Weight:	388.89
Target:	Elastase
Pathway:	Metabolic Enzyme/Protease
Storage:	Please store the product under the recommended conditions in the Certificate of Analysis.



BIOLOGICAL ACTIVITY

Description	Ala-Ala-Pro-Val-chloromethylketone is an irreversible human neutrophil elastase (NE) inhibitor for use in the study of chronic inflammatory airway diseases ^[1] .
In Vivo	Methoxysuccinyl-Ala-Ala-Pro-Val chloromethylketone (oropharyngeal aspiration; 85 μM, 40 μL; days 1, 4, and 7) blocks NE-induced cupped cell chemotaxis and significantly reduces Muc5ac gene and protein expression in male Balb/c mice ^[1] . MCE has not independently confirmed the accuracy of these methods. They are for reference only.

REFERENCES

[1]. Judith A Voynow, et al. Neutrophil elastase induces mucus cell metaplasia in mouse lung. *Am J Physiol Lung Cell Mol Physiol*. 2004 Dec;287(6):L1293-302.

Caution: Product has not been fully validated for medical applications. For research use only.

Tel: 609-228-6898

Fax: 609-228-5909

E-mail: tech@MedChemExpress.com

Address: 1 Deer Park Dr, Suite Q, Monmouth Junction, NJ 08852, USA