

## Gly-Gly-Phe-Gly

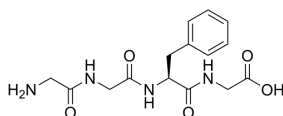
Cat. No.: HY-P3669  
CAS No.: 200427-88-9  
Batch No.: 314866  
Chemical Name: Glycine, glycylglycyl-L-phenylalanyl-

### PHYSICAL AND CHEMICAL PROPERTIES

Molecular Formula: C<sub>15</sub>H<sub>20</sub>N<sub>4</sub>O<sub>5</sub>  
Molecular Weight: 336.34  
Storage: Sealed storage, away from moisture and light  
Powder -80°C 2 years  
-20°C 1 year

\* In solvent : -80°C, 6 months; -20°C, 1 month (sealed storage, away from moisture and light)

### Chemical Structure:



### ANALYTICAL DATA

Appearance: White to off-white (Solid)  
MS: Consistent with structure  
Purity (HPLC): 98.90%  
Conclusion: The product has been tested and complies with the given specifications.

**Caution: Product has not been fully validated for medical applications. For research use only.**

Tel: 609-228-6898

Fax: 609-228-5909

E-mail: tech@MedChemExpress.com

Address: 1 Deer Park Dr, Suite Q, Monmouth Junction, NJ 08852, USA