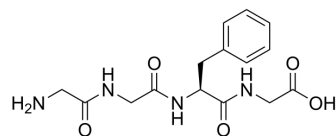


Gly-Gly-Phe-Gly

Cat. No.:	HY-P3669
CAS No.:	200427-88-9
Molecular Formula:	C ₁₅ H ₂₀ N ₄ O ₅
Molecular Weight:	336.34
Sequence Shortening:	GGFG
Target:	Others
Pathway:	Others
Storage:	Sealed storage, away from moisture and light
	Powder -80°C 2 years
	-20°C 1 year



* In solvent : -80°C, 6 months; -20°C, 1 month (sealed storage, away from moisture and light)

SOLVENT & SOLUBILITY

In Vitro

DMSO : 100 mg/mL (297.32 mM; Need ultrasonic)

Preparing Stock Solutions	Solvent Concentration	Mass	1 mg	5 mg	10 mg
	1 mM		2.9732 mL	14.8659 mL	29.7318 mL
	5 mM		0.5946 mL	2.9732 mL	5.9464 mL
	10 mM		0.2973 mL	1.4866 mL	2.9732 mL

Please refer to the solubility information to select the appropriate solvent.

BIOLOGICAL ACTIVITY

Description

Gly-Gly-Phe-Gly is a peptide spacer and can be applied to [Doxorubicin](#) (HY-15142A) (DXR) conjugates^[1].

REFERENCES

[1]. Shiose Y, et al. Systematic research of peptide spacers controlling drug release from macromolecular prodrug system, carboxymethyl dextran polyalcohol-peptide-drug conjugates. *Bioconj Chem.* 2009 Jan;20(1):60-70.

Caution: Product has not been fully validated for medical applications. For research use only.

Tel: 609-228-6898

Fax: 609-228-5909

E-mail: tech@MedChemExpress.com

Address: 1 Deer Park Dr, Suite Q, Monmouth Junction, NJ 08852, USA