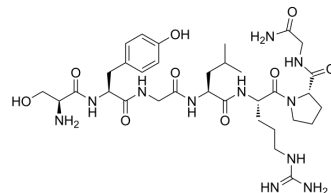


LH-RH (4-10)

Cat. No.:	HY-P3675
CAS No.:	51776-33-1
Molecular Formula:	C ₃₃ H ₅₃ N ₁₁ O ₉
Molecular Weight:	747.84
Sequence Shortening:	SYGLRPG-NH ₂
Target:	GnRH Receptor
Pathway:	GPCR/G Protein
Storage:	Please store the product under the recommended conditions in the Certificate of Analysis.



BIOLOGICAL ACTIVITY

Description	LH-RH (4-10) is a heptapeptide, one of major degradation products of luteinising-hormone releasing hormone (LHRH) via pituitary and hypothalamus. LH-RH (4-10) produced in macrophages and type II pneumocytes ^[1] .
In Vitro	The formation of LHRH 4-10, LHRH 7-10, and LHRH 6-10Co-incubation are inhibited by known enzyme inhibitors including Captopril (HY-B0368) (an ACE inhibitor), Thiorphan (HY-W013375) (an EP24.11 inhibitor), and Ethylenediaminetetraacetic acid (HY-Y0682) (an EP24.15 inhibitor) ^[1] . LH-RH (4-10) inhibits the binding of ¹²⁵ I-labeled GnRH to monoclonal antibody P ₈ 16 ₆₂ with an IC ₅₀ value of 23 pM ^[2] . MCE has not independently confirmed the accuracy of these methods. They are for reference only.

REFERENCES

- [1]. Yang X, et al. Enzymatic degradation of luteinizing hormone releasing hormone (LHRH)/[D-Ala6]-LHRH in lung pneumocytes. *Pharm Res.* 1998 Sep;15(9):1480-4.
- [2]. Talwar GP, et al. Bioeffective monoclonal antibody against the decapeptide gonadotropin-releasing hormone: reacting determinant and action on ovulation and estrus suppression. *Proc Natl Acad Sci U S A.* 1985 Feb;82(4):1228-31.

Caution: Product has not been fully validated for medical applications. For research use only.

Tel: 609-228-6898

Fax: 609-228-5909

E-mail: tech@MedChemExpress.com

Address: 1 Deer Park Dr, Suite Q, Monmouth Junction, NJ 08852, USA