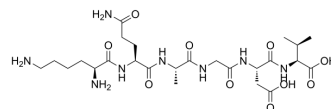


## Lys-Gln-Ala-Gly-Asp-Val

Cat. No.:	HY-P3726
CAS No.:	80755-87-9
Molecular Formula:	C <sub>25</sub> H <sub>44</sub> N <sub>8</sub> O <sub>10</sub>
Molecular Weight:	616.66
Sequence Shortening:	KQAGDV
Target:	Integrin
Pathway:	Cytoskeleton
Storage:	Please store the product under the recommended conditions in the Certificate of Analysis.



### BIOLOGICAL ACTIVITY

<b>Description</b>	Lys-Gln-Ala-Gly-Asp-Val (KQAGDV) is the six most carboxyl-terminal amino acids in the fibrinogen $\gamma$ -chain sequence. Lys-Gln-Ala-Gly-Asp-Val is a cell adhesion peptide which is mediated through the $\alpha_2\beta_3$ integrin. Lys-Gln-Ala-Gly-Asp-Val is a potent adhesion ligand for smooth muscle cells (SMCs) <sup>[1][2]</sup> .
<b>In Vitro</b>	Lys-Gln-Ala-Gly-Asp-Val (2 nM) improves smooth muscle cell adhesion and growth on polymers <sup>[2]</sup> . MCE has not independently confirmed the accuracy of these methods. They are for reference only.

### REFERENCES

- [1]. Dong CL, et al. The cytocompatibility of polyhydroxyalkanoates coated with a fusion protein of PHA repressor protein (PhaR) and Lys-Gln-Ala-Gly-Asp-Val (KQAGDV) polypeptide. *Biomaterials*. 2012 Mar;33(9):2593-9.
- [2]. Mann BK, et al. Tethered-TGF-beta increases extracellular matrix production of vascular smooth muscle cells. *Biomaterials*. 2001 Mar;22(5):439-44.

**Caution: Product has not been fully validated for medical applications. For research use only.**

Tel: 609-228-6898

Fax: 609-228-5909

E-mail: tech@MedChemExpress.com

Address: 1 Deer Park Dr, Suite Q, Monmouth Junction, NJ 08852, USA