

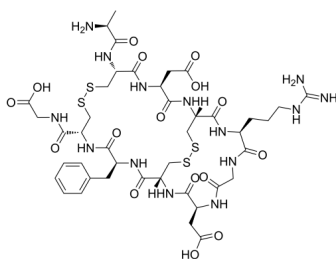
RGD-4C

Cat. No.: HY-P3732
Batch No.: 346097
CAS No.: 332179-76-7
Molecular Formula: C₄₂H₆₀N₁₄O₁₆S₄

ANALYTICAL DATA

Theoretical: C(-), H(-), N(-), Peptide Content(≥60.0%)
Result: C(36.16%), H(4.406%), N(11.94%), Peptide Content(69.78%)

Chemical Structure:



Caution: Product has not been fully validated for medical applications. For research use only.

Tel: 609-228-6898

Fax: 609-228-5909

E-mail: tech@MedChemExpress.com

Address: 1 Deer Park Dr, Suite Q, Monmouth Junction, NJ 08852, USA