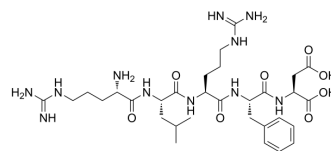


γ-Bag cell peptide

| | |
|----------------------|---|
| Cat. No.: | HY-P3778 |
| CAS No.: | 109024-48-8 |
| Molecular Formula: | C ₃₁ H ₅₁ N ₁₁ O ₈ |
| Molecular Weight: | 705.81 |
| Sequence Shortening: | RLRFD |
| Target: | Others |
| Pathway: | Others |
| Storage: | Please store the product under the recommended conditions in the Certificate of Analysis. |



BIOLOGICAL ACTIVITY

Description

γ-bag cell peptide is a peptide. γ-bag cell peptide is located near the N-terminus of the egg laying prohormone, the vesicle is released upon insulin stimulation. γ-bag cell peptide can be used for the research of the central and peripheral nervous systems^[1].

REFERENCES

[1]. Callie A Croushore, et al. Microfluidic device for the selective chemical stimulation of neurons and characterization of peptide release with mass spectrometry. Anal Chem. 2012 Nov 6;84(21):9446-52.

Caution: Product has not been fully validated for medical applications. For research use only.

Tel: 609-228-6898

Fax: 609-228-5909

E-mail: tech@MedChemExpress.com

Address: 1 Deer Park Dr, Suite Q, Monmouth Junction, NJ 08852, USA