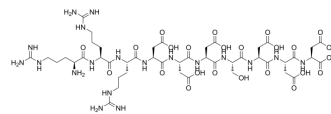


Casein Kinase 2 Substrate Peptide

Cat. No.:	HY-P3815
CAS No.:	132176-35-3
Molecular Formula:	C ₄₅ H ₇₃ N ₁₉ O ₂₄
Molecular Weight:	1264.17
Sequence Shortening:	RRRDDSDDD
Target:	Casein Kinase
Pathway:	Cell Cycle/DNA Damage; Stem Cell/Wnt
Storage:	Sealed storage, away from moisture and light
	Powder -80°C 2 years
	-20°C 1 year



* In solvent : -80°C, 6 months; -20°C, 1 month (sealed storage, away from moisture and light)

SOLVENT & SOLUBILITY

In Vitro

DMSO : 20 mg/mL (15.82 mM; Need ultrasonic)

Preparing Stock Solutions	Solvent Concentration	Mass		
		1 mg	5 mg	10 mg
	1 mM	0.7910 mL	3.9552 mL	7.9103 mL
	5 mM	0.1582 mL	0.7910 mL	1.5821 mL
	10 mM	0.0791 mL	0.3955 mL	0.7910 mL

Please refer to the solubility information to select the appropriate solvent.

BIOLOGICAL ACTIVITY

Description

Casein Kinase 2 Substrate Peptide is a common CK2 substrate peptide. Casein Kinase 2 Substrate Peptide is synthesized with its C-terminus conjugated to 5-[(2-aminoethyl)amino]naphthalene-1-sulfonic acid (EDANS). Casein Kinase 2 Substrate Peptide can be used for protein kinase CK2 activity determination^[1].

IC₅₀ & Target

CK2

CUSTOMER VALIDATION

- Pharmacol Res. 2023 Nov 7:106986.

See more customer validations on www.MedChemExpress.com

REFERENCES

[1]. Gratz A, et al. A CE-based assay for human protein kinase CK2 activity measurement and inhibitor screening. Electrophoresis. 2010 Jan;31(4):634-40.

Caution: Product has not been fully validated for medical applications. For research use only.

Tel: 609-228-6898

Fax: 609-228-5909

E-mail: tech@MedChemExpress.com

Address: 1 Deer Park Dr, Suite Q, Monmouth Junction, NJ 08852, USA