

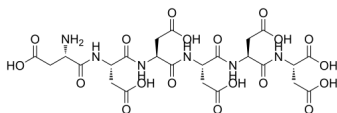
Asp-Asp-Asp-Asp-Asp

Cat. No.: HY-P3823
Batch No.: 294742
CAS No.: 145224-96-0
Molecular Formula: C₂₄H₃₂N₆O₁₉

ANALYTICAL DATA

Theoretical: C(-), H(-), N(-), Peptide Content(≥60.0%)
Result: C(35.22%), H(4.985%), N(10.54%), Peptide Content(88.90%)

Chemical Structure:



Caution: Product has not been fully validated for medical applications. For research use only.

Tel: 609-228-6898

Fax: 609-228-5909

E-mail: tech@MedChemExpress.com

Address: 1 Deer Park Dr, Suite Q, Monmouth Junction, NJ 08852, USA