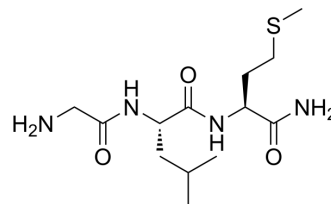


Gly-Leu-Met-NH₂

Cat. No.:	HY-P3888
CAS No.:	4652-64-6
Molecular Formula:	C ₁₃ H ₂₆ N ₄ O ₃ S
Molecular Weight:	318.44
Target:	Neurokinin Receptor
Pathway:	GPCR/G Protein; Neuronal Signaling
Storage:	Please store the product under the recommended conditions in the Certificate of Analysis.



BIOLOGICAL ACTIVITY

Description

Gly-Leu-Met-NH₂ is a C-terminal tripeptide of Substance P ([Substance P \(HY-P0201\)](#)). Substance P is a neuropeptide^[1].

REFERENCES

[1]. Sandrine Sagan, et al. Conformational analysis of the C-terminal Gly-Leu-Met-NH₂ tripeptide of substance P bound to the NK-1 receptor. Chem Biol. 2005 May;12(5):555-65.

Caution: Product has not been fully validated for medical applications. For research use only.

Tel: 609-228-6898

Fax: 609-228-5909

E-mail: tech@MedChemExpress.com

Address: 1 Deer Park Dr, Suite Q, Monmouth Junction, NJ 08852, USA