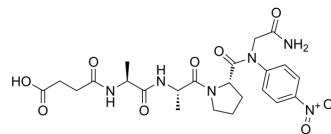


## Suc-Ala-Ala-Pro-Gly-pNA

Cat. No.:	HY-P3938
CAS No.:	72682-68-9
Molecular Formula:	C <sub>23</sub> H <sub>30</sub> N <sub>6</sub> O <sub>9</sub>
Molecular Weight:	534.52
Sequence Shortening:	Suc-AAPG-pNA
Target:	Others
Pathway:	Others
Storage:	Please store the product under the recommended conditions in the Certificate of Analysis.



### BIOLOGICAL ACTIVITY

#### Description

Suc-Ala-Ala-Pro-Gly-Pna is a peptide. Suc-Ala-Ala-Pro-Gly-pNA can be used for the research of various biochemical<sup>[1]</sup>.

### REFERENCES

[1]. R Bone, et al. Structural basis for broad specificity in alpha-lytic protease mutants. *Biochemistry*. 1991 Oct 29;30(43):10388-98.

**Caution: Product has not been fully validated for medical applications. For research use only.**

Tel: 609-228-6898

Fax: 609-228-5909

E-mail: tech@MedChemExpress.com

Address: 1 Deer Park Dr, Suite Q, Monmouth Junction, NJ 08852, USA