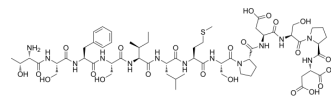


SDP116

Cat. No.:	HY-P3942
Molecular Formula:	C ₆₀ H ₉₃ N ₁₃ O ₂₃ S
Molecular Weight:	1396.52
Sequence Shortening:	TSFSILMSPDSPD
Target:	Others
Pathway:	Others
Storage:	Sealed storage, away from moisture and light, under nitrogen Powder -80°C 2 years -20°C 1 year * In solvent : -80°C, 6 months; -20°C, 1 month (sealed storage, away from moisture and light, under nitrogen)



SOLVENT & SOLUBILITY

In Vitro	H ₂ O : 1.11 mg/mL (0.79 mM; Need ultrasonic)
----------	--

BIOLOGICAL ACTIVITY

Description	SDP116 is a synthetic Stachel-derived peptide of GPR116 Stachel peptide. SDP116 has ADGRF5 agonist effect ^[1] .
In Vitro	Stachel-derived peptide SDP116 stimulation of GPR116 inhibits MuSC activation ^[1] . MCE has not independently confirmed the accuracy of these methods. They are for reference only.

REFERENCES

- [1]. Lilian M Demberg, et al. Activation of Adhesion G Protein-coupled Receptors: AGONIST SPECIFICITY OF STACHEL SEQUENCE-DERIVED PEPTIDES. J Biol Chem. 2017 Mar 17;292(11):4383-4394.
- [2]. Charlotte Sénéchal, et al. The adhesion G-protein-coupled receptor Gpr116 is essential to maintain the skeletal muscle stem cell pool. Cell Rep. 2022 Nov 15;41(7):111645.

Caution: Product has not been fully validated for medical applications. For research use only.

Tel: 609-228-6898

Fax: 609-228-5909

E-mail: tech@MedChemExpress.com

Address: 1 Deer Park Dr, Suite Q, Monmouth Junction, NJ 08852, USA