

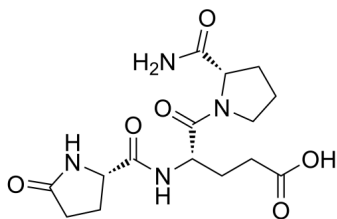
(Glu2)-TRH

Cat. No.: HY-P3960
Batch No.: 314877
CAS No.: 85541-78-2
Molecular Formula: C₁₅H₂₂N₄O₆

ANALYTICAL DATA

Theoretical: C(-), H(-), N(-), Peptide Content(≥60.0%)
Result: C(47.95%), H(5.86%), N(15.28%), Peptide Content(96.6%)

Chemical Structure:



Caution: Product has not been fully validated for medical applications. For research use only.

Tel: 609-228-6898

Fax: 609-228-5909

E-mail: tech@MedChemExpress.com

Address: 1 Deer Park Dr, Suite Q, Monmouth Junction, NJ 08852, USA