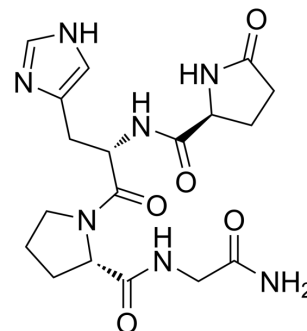


Glp-His-Pro-Gly-NH₂

Cat. No.:	HY-P3975
CAS No.:	41880-59-5
Molecular Formula:	C ₁₈ H ₂₅ N ₇ O ₅
Molecular Weight:	419.44
Sequence Shortening:	Glp-HPG-NH ₂
Target:	Others
Pathway:	Others
Storage:	Please store the product under the recommended conditions in the Certificate of Analysis.



BIOLOGICAL ACTIVITY

Description	Glp-His-Pro-Gly-NH ₂ (pGlu-His-Pro-Gly-NH ₂) is a peptide containing 4 amino acids. Glp-His-Pro-Gly-NH ₂ stimulates gonadotrophin, luteinizing hormone (LH) and follicle stimulating hormone (FSH) release ^{[1][2]} .
In Vitro	Glp-His-Pro-Gly-NH ₂ (pGlu-His-Pro-Gly-NH ₂ ; 6.6 µg/mL; human foetal pituitaries) induces luteinizing hormone (LH) and follicle stimulating hormone (FSH) release with 85% and 96%, respectively ^[2] . MCE has not independently confirmed the accuracy of these methods. They are for reference only.

REFERENCES

- [1]. Visser TJ, et, al. A new radioimmunoassay of thyrotropin-releasing hormone. FEBS Lett. 1977 Nov 1;83(1):37-40.
- [2]. Groom GV, et, al. Gonadotrophin release from human foetal pituitary cultures induced by fragments of the luteinizing hormone-releasing hormone. FEBS Lett. 1973 Jun 15;33(1):57-60.

Caution: Product has not been fully validated for medical applications. For research use only.

Tel: 609-228-6898

Fax: 609-228-5909

E-mail: tech@MedChemExpress.com

Address: 1 Deer Park Dr, Suite Q, Monmouth Junction, NJ 08852, USA