

## PAR-4 (1-6) amide (human)

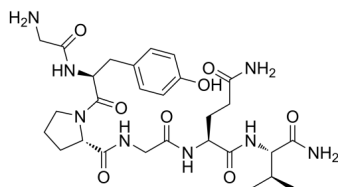
---

Cat. No.: HY-P4004  
Batch No.: 267741  
CAS No.: 245443-51-0  
Molecular Formula: C<sub>28</sub>H<sub>42</sub>N<sub>8</sub>O<sub>8</sub>

### ANALYTICAL DATA

Theoretical: C(-), H(-), N(-), Peptide Content(≥60.0%)  
Result: C(49.01%), H(7.34%), N(16.03%), Peptide Content(88.50%)

Chemical Structure:



**Caution: Product has not been fully validated for medical applications. For research use only.**

Tel: 609-228-6898

Fax: 609-228-5909

E-mail: [tech@MedChemExpress.com](mailto:tech@MedChemExpress.com)

Address: 1 Deer Park Dr, Suite Q, Monmouth Junction, NJ 08852, USA