

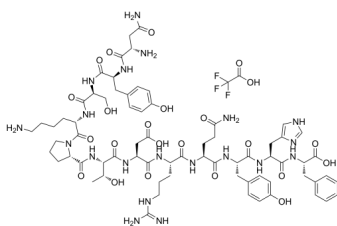
(D)-PPA 1 (TFA)

Cat. No.: HY-P4072A
Batch No.: 271203
Molecular Formula: C₇₂H₉₉F₃N₂₀O₂₃

ANALYTICAL DATA

Theoretical: C(-), H(-), N(-), Peptide Content(≥60.0%)
Result: C(42.64%), H(5.45%), N(13.29%), Peptide Content(73.8%)

Chemical Structure:



Caution: Product has not been fully validated for medical applications. For research use only.

Tel: 609-228-6898

Fax: 609-228-5909

E-mail: tech@MedChemExpress.com

Address: 1 Deer Park Dr, Suite Q, Monmouth Junction, NJ 08852, USA