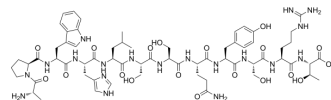


CTP

Cat. No.: HY-P4094
CAS No.: 1052692-86-0
Molecular Formula: C₆₄H₉₃N₁₉O₁₉
Molecular Weight: 1432.54
Sequence: Ala-Pro-Trp-His-Leu-Ser-Ser-Gln-Tyr-Ser-Arg-Thr
Sequence Shortening: APWHLSSQYSRT
Target: Others
Pathway: Others
Storage: Sealed storage, away from moisture and light
 Powder -80°C 2 years
 -20°C 1 year



* In solvent : -80°C, 6 months; -20°C, 1 month (sealed storage, away from moisture and light)

SOLVENT & SOLUBILITY

In Vitro

H₂O : 100 mg/mL (69.81 mM; Need ultrasonic)

Concentration	Solvent	Mass		
		1 mg	5 mg	10 mg
Preparing Stock Solutions	1 mM	0.6981 mL	3.4903 mL	6.9806 mL
	5 mM	0.1396 mL	0.6981 mL	1.3961 mL
	10 mM	0.0698 mL	0.3490 mL	0.6981 mL

Please refer to the solubility information to select the appropriate solvent.

BIOLOGICAL ACTIVITY

Description

CTP is a cardiac targeting peptide. CTP transduces cardiomyocytes in vitro. CTP leads to efficient and specific transduction of heart tissue in mice model. CTP can be used to deliver therapeutic peptides, proteins and nucleic acid specifically to the heart^[1].

REFERENCES

[1]. Zahid M, et al. Identification of a cardiac specific protein transduction domain by in vivo biopanning using a M13 phage peptide display library in mice. PLoS One. 2010 Aug 17;5(8):e12252.

Caution: Product has not been fully validated for medical applications. For research use only.

Tel: 609-228-6898

Fax: 609-228-5909

E-mail: tech@MedChemExpress.com

Address: 1 Deer Park Dr, Suite Q, Monmouth Junction, NJ 08852, USA