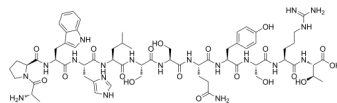


CTP

Cat. No.: HY-P4094
 Batch No.: 273004
 CAS No.: 1052692-86-0
 Molecular Formula: C₆₄H₉₃N₁₉O₁₉

ANALYTICAL DATA

Theoretical: C(-), H(-), N(-), Peptide Content(≥60.0%)
 Result: C(48.67%), H(6.79%), N(16.53%), Peptide Content(89.00%)
 Chemical Structure:



Caution: Product has not been fully validated for medical applications. For research use only.

Tel: 609-228-6898

Fax: 609-228-5909

E-mail: tech@MedChemExpress.com

Address: 1 Deer Park Dr, Suite Q, Monmouth Junction, NJ 08852, USA