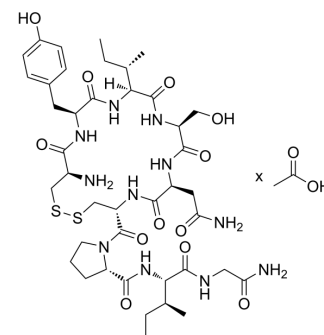


## Isotocin acetate

<b>Cat. No.:</b>	HY-P4184A
<b>Molecular Formula:</b>	$C_{41}H_{63}N_{11}O_{12}S_2 \cdot xC_2H_4O_2$
<b>Sequence:</b>	Cys-Tyr-Ile-Ser-Asn-Cys-Pro-Ile-Gly-NH <sub>2</sub> (Disulfide bridge: Cys1-Cys6)
<b>Sequence Shortening:</b>	CYISNCPIG-NH <sub>2</sub> (Disulfide bridge: Cys1-Cys6)
<b>Target:</b>	Others
<b>Pathway:</b>	Others
<b>Storage:</b>	Please store the product under the recommended conditions in the Certificate of Analysis.



### BIOLOGICAL ACTIVITY

#### Description

Isotocin (acetate) ((Ser4,Ile8)-Oxytocin (acetate)) is a polypeptide that can be found by peptide screening. Peptide screening is a research tool that pools active peptides primarily by immunoassay. Peptide screening can be used for protein interaction, functional analysis, epitope screening, especially in the field of agent research and development<sup>[1]</sup>.

### REFERENCES

[1]. Staffan Birnbaum, et al. Peptide screening. Current Opinion in Biotechnology Volume 3, Issue 1, February 1992, Pages 49-54.

**Caution: Product has not been fully validated for medical applications. For research use only.**

Tel: 609-228-6898

Fax: 609-228-5909

E-mail: tech@MedChemExpress.com

Address: 1 Deer Park Dr, Suite Q, Monmouth Junction, NJ 08852, USA