

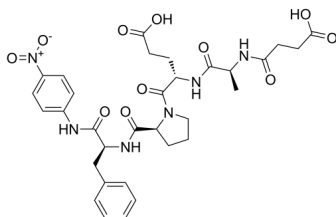
Suc-Ala-Glu-Pro-Phe-pNA

Cat. No.: HY-P4202
Batch No.: 274254
CAS No.: 128802-76-6
Molecular Formula: C₃₂H₃₈N₆O₁₁

ANALYTICAL DATA

Theoretical: C(-), H(-), N(-), Peptide Content(≥60.0%)
Result: C(53.02%), H(5.66%), N(11.58%), Peptide Content(94.10%)

Chemical Structure:



Caution: Product has not been fully validated for medical applications. For research use only.

Tel: 609-228-6898

Fax: 609-228-5909

E-mail: tech@MedChemExpress.com

Address: 1 Deer Park Dr, Suite Q, Monmouth Junction, NJ 08852, USA